



MEMORY CARE FLOOR PLANS

Our family-oriented Garden Ridge community is located near San Antonio, yet offers a tranquil setting nestled among the trees. Our team embraces a proactive approach to the health and wellness of our residents and with our “resident first” philosophy, we are able to ensure quality of life through activities, home cooked meals, and compassionate care.

Each private suite includes a bathroom and A/C unit. Our rates include three home-cooked meals, housekeeping, laundry, linens, utilities, activities, basic assistance with activities of daily living, and the availability of our trained care associates 24 hours a day.

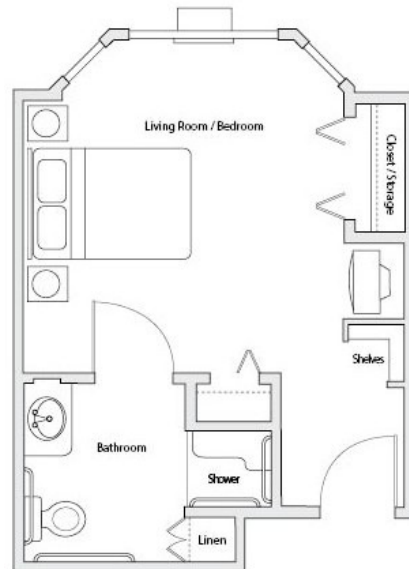
ADDITIONAL FEES:

- Incontinence & Personal Care (optional): \$350 / month
- Second person fee: \$1,700 / month
- Memory Care Plus starting at: \$500 / month
- Respite Rate: \$250 / night

* One time community fee of \$2,000 required
Rates subject to change.

PRIVATE

Rates start at \$5,200* / month
Approximately 325 square feet



19095 FM 2252 | Garden Ridge, TX 78266 | 210-651-6377
SodalisGardenRidge.com

AL# 101917