



MEMORY CARE FLOOR PLANS

The Memory Care team embraces a proactive approach to resident health and wellness, delivering the highest levels of care with the warmth and hospitality of family. The team has specialized training to optimize quality of life through everyday activities in a meaningful way. For caregivers needing extra help during the day or while on vacation, Sodalis Tallahassee Memory Care offers respite stays, if rooms are available.

ADDITIONAL FEES:

- Level of Care: Memory Care Plus: \$600
- Deluxe Companion Fee: \$3,200 (*plus Care Fee*)
- Studio Companion Fee: \$2,900 (*plus Care Fee*)
- Community Fee (one time, non-refundable): \$2,000
- Respite Rate: \$175 / day
- Non-House Pharmacy Fee: \$175 / month
- Pet Fee**

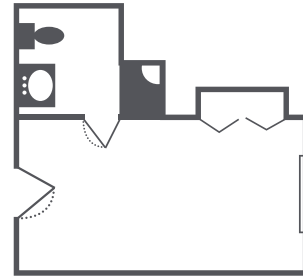
Rates subject to change.

* For residents who require assistance beyond our basic services, Sodalis Tallahassee Memory Care uses a needs assessment tool to determine a resident's level of care upon admission.

** *Small approved pets are allowed provided the resident can care for it and it is contained on a leash when out of their apartment.*

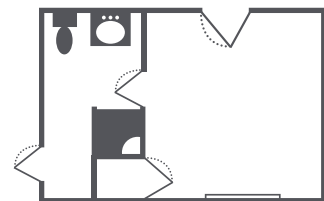
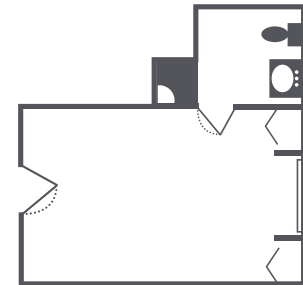
DELUXE STUDIO

Bedroom / Living Room | Bath
Rates start at \$4,800* / month
245 square feet



STUDIO

Bedroom / Living Room with
Private or Shared Bath
Rates start at \$4,600* / month
240 square feet



2767 Raymond Diehl Rd. | Tallahassee, FL 32309 | 850.668.2884

www.SodalisSenior.com

ALF #AL11401