



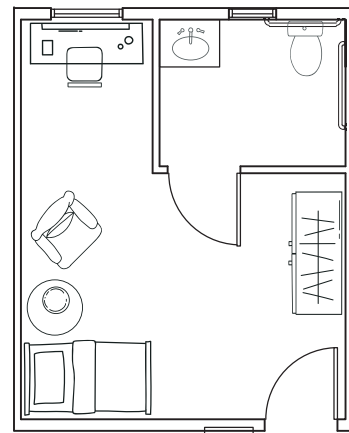
MEMORY CARE FLOOR PLAN

The Memory Care team embraces a proactive approach to resident health and wellness, delivering the highest levels of care with the warmth and hospitality of family. The team has specialized training to optimize quality of life through everyday activities in a meaningful way.

Each of our 24 bedrooms include a private half bath and are fully furnished. Rates include three home-cooked meals, housekeeping, laundry, linens, utilities, activities, assistance with daily living, and trained care associates 24 hours a day.

PRIVATE BEDROOM

All-inclusive rate starts at \$5,900* / month
Approximately 200 square feet



ADDITIONAL FEES:

- Comprehensive Plus Care: Add \$300 / month*
- Non-House Pharmacy Fee: \$175 / month
- Pet Fee / Scooter Fee: \$250
- Respite Rate: \$195 / day
- Community Fee (one time, non-refundable): \$1,800

* For residents who require assistance beyond our basic services, Sodalis Shavano Park uses a needs assessment tool to determine a resident's level of care upon admission.

Rates subject to change.

3411 Paesano's Parkway | San Antonio, Texas 78231 | 210.408.1002

www.SodalisShavanoPark.com

ALF #106230