



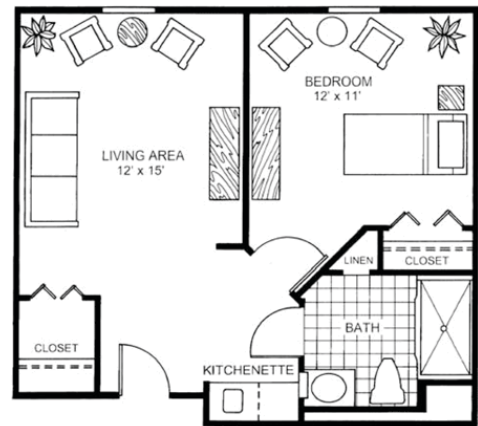
MEMORY CARE FLOOR PLANS

The Memory Care team embraces a proactive approach to resident health and wellness, delivering the highest levels of care with the warmth and hospitality of family. The team has specialized training to optimize quality of life through everyday activities in a meaningful way. For caregivers needing extra help during the day or while on vacation, Sodalis Largo offers respite stays, if rooms are available.

Each private suite includes a bathroom and A/C unit. Rates include three home-cooked meals, housekeeping, laundry, linens, utilities, activities, basic assistance with daily living, and trained care associates 24 hours a day.

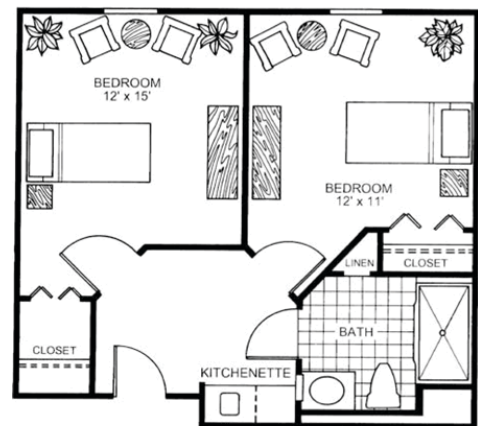
ONE BEDROOM

Living Room | Bedroom | Kitchenette | Bath
All-inclusive rate starts at \$5,180* / month
509 square feet



COMPANION APARTMENT

2 Bedroom | Kitchenette | 1 Bath
All-inclusive rate starts at \$3,875* / month
509 square feet



333 16th Avenue SE | Largo, FL 33771 | 727.588.0020

www.SodalisLargo.com

ALF #7933



ADDITIONAL FEES:

- Comprehensive Plus Care: Add \$300 / month*
- Second Related Person Fee: \$1,000 (*plus Care Fee*)
- Non-House Pharmacy Fee: \$175 / month
- Pet Fee / Scooter Fee: \$250
- Respite Rate: \$195 / day
- Community Fee (one time, non-refundable): \$1,800

* For residents who require assistance beyond our basic services, Sodalís Largo uses a needs assessment tool to determine a resident's level of care upon admission.

Rates subject to change.

STUDIO

Bedroom / Living Room | Kitchenette | Bath
All-inclusive rate starts at \$4,765* / month
404 square feet

