



FLOOR PLANS

Engaged living, a tranquil setting, and compassionate care are hallmarks of Sodalis Defuniak, a community that encourages an active lifestyle and daily activities for residents, both on campus and throughout the beautiful Defuniak Springs area. With designer touches throughout, you'll enjoy a spacious apartment home and a list of amenities, knowing that you have a full range of personalized care available.

ADDITIONAL FEES:

- Levels of Care*:
 - Level 1: \$400 / month
 - Level 2: \$600 / month
 - Level 3: \$800 / month
 - Level 4: \$1,000 / month
 - Level 5: \$1,200 / month
- Companion Fee: \$2,300
- Respite Rate: \$150 / day
- Community Fee (one time, non-refundable): \$2,000
- Non-House Pharmacy Fee: \$175 / month
- Pet Fee** / Scooter Fee: \$250

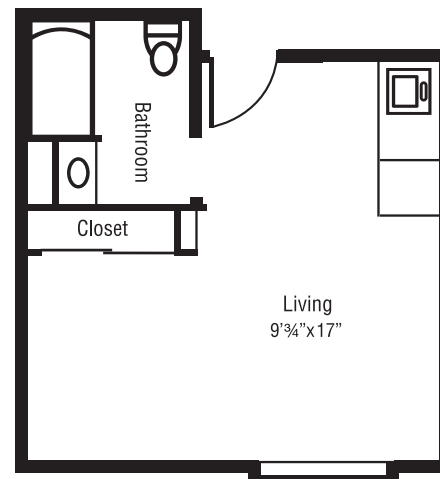
Rates subject to change.

** For residents who require assistance beyond our basic services, Sodalis Defuniak uses a needs assessment tool to determine a resident's level of care upon admission.*

*** Small approved pets are allowed provided the resident can care for it and it is contained on a leash when out of their apartment.*

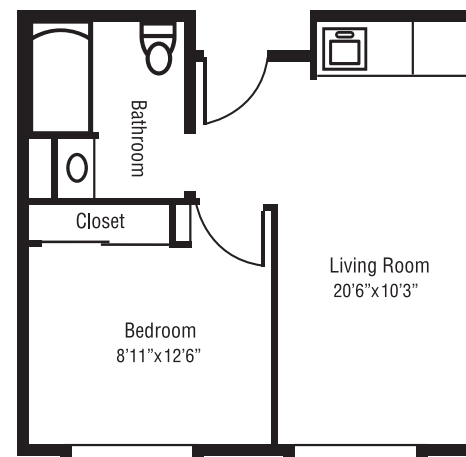
STUDIO

Living Area | Kitchenette | Bath
Rates start at \$2,800* / month
320 square feet



ONE BEDROOM

Living Room | Bedroom | Kitchenette | Bath
Rates start at \$3,700* / month
430 square feet



718 Walton Road | Defuniak Springs, Florida 32433 | 850.951.1880

www.SodalisDefuniak.com

ALF #9616