



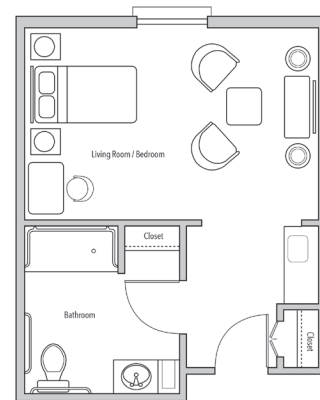
ASSISTED LIVING FLOOR PLANS

Nestled in a serene, hill country landscape, the dynamic Sodalis Buda assisted living community encourages an active lifestyle for residents, both on campus and in nearby downtown Buda. Built in 2018 with designer touches throughout, residents enjoy a spacious apartment home and a list of amenities, knowing a full range of personalized care is available.

A trained chef creates three delicious meals and snacks per resident's wishes. With a "residents first" philosophy, the Sodalis Buda team embraces a proactive approach to each resident's health and wellness, making the community distinctly capable of providing the highest levels of care, delivered with the warmth and hospitality of a family member. Everything has been considered and well-planned to make Sodalis Buda the perfect new home.

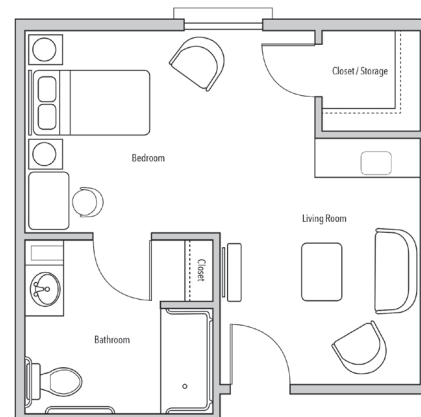
STUDIO

Living/Bedroom | Kitchen | Bath
All inclusive rate starts at \$3,650* / month
Approximately 337 square feet



STUDIO DELUXE

Expanded Living/Bedroom | Kitchen | Bath
All-inclusive rate starts at \$3,900* / month
374 square feet





ADDITIONAL FEES:

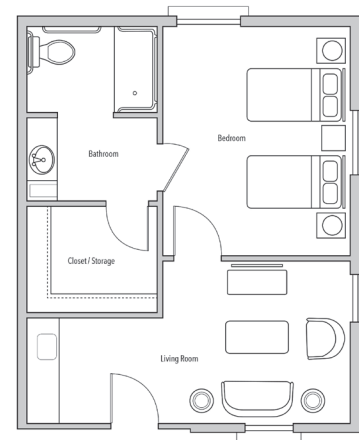
- Levels of Care*:
 - Level 1: \$350 / month
 - Level 2: \$700 / month
 - Level 3: \$1,000 / month
 - Level 4: \$1,500 / month
- Medication Management is included in each level
- Second person fee \$1,000
- Respite night rate \$195
- Pet deposit \$500
- Community Fee (one time, non-refundable) \$2,000

* For residents who require assistance beyond basic services, Sodalis Elder Living uses a needs assessment tool to determine a resident's level of care upon admission.

Rates subject to change.

ONE BEDROOM

Living Room | Bedroom | Kitchen | Bath
All-inclusive rate starts at \$4,400* / month
495 square feet



** All apartments with a courtyard exit are subject to an additional \$100 per month charge on base rental amount.*

645 FM 967 | Buda, TX 78610 | 512.295.5600
www.SodalisBuda.com